

COMORE LOMA DIVISION NO. 23

Bonneville County, Idaho

For Additional Information Contact:

Skidmore, Inc.

3920 E. Sunnyside Rd., Ammon, ID 83406

Randy Skidmore – (208) 681-2199

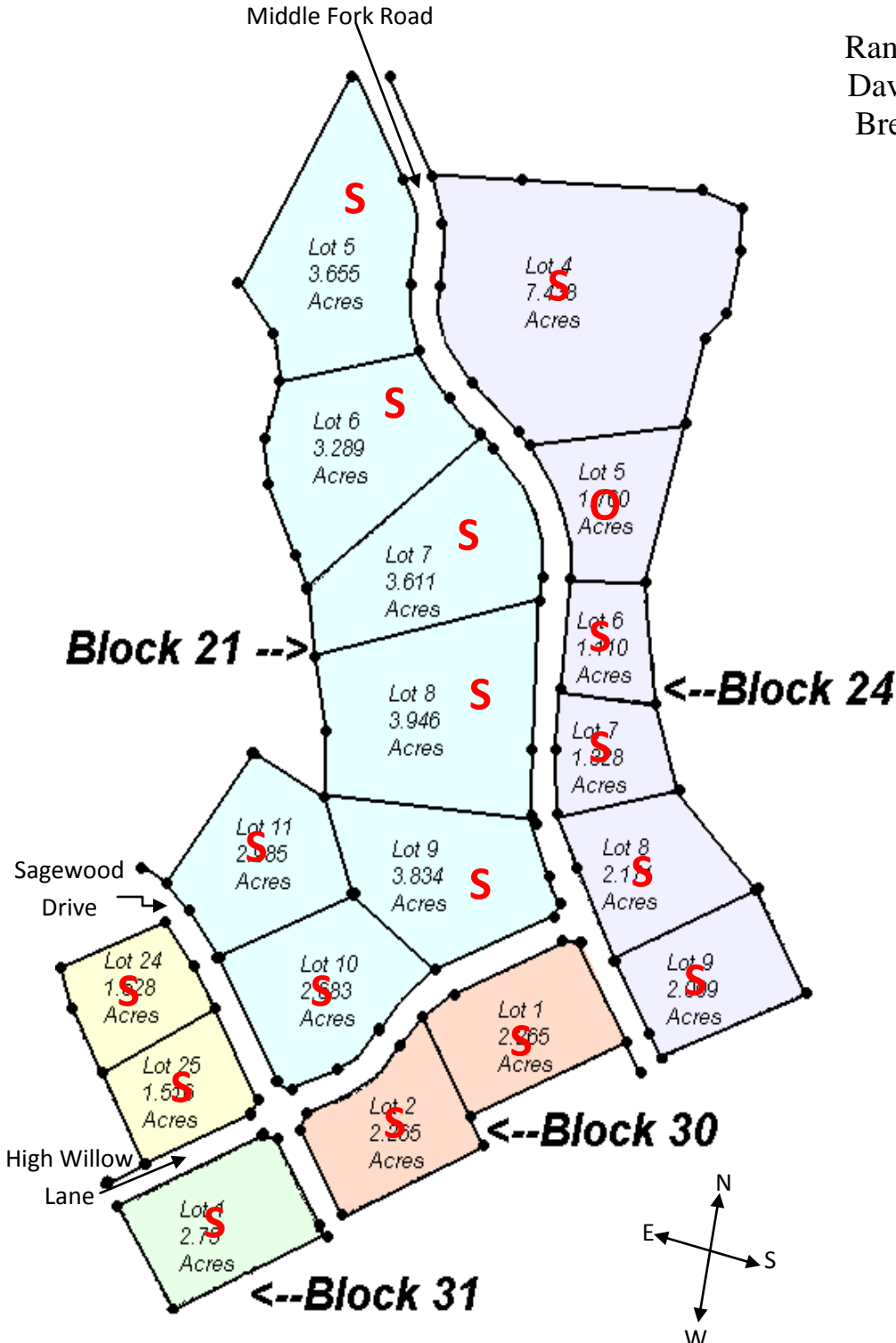
David Skidmore – (208) 681-1299

Brett Skidmore – (208) 589-2960

Office – (208) 529-3672

Toll Free – (800) 331-4491

As of October 28, 2015



<p align="center">Block 18</p> <p>L 24 – 1.528 AC –</p> <p>L 25 – 1.516 AC –</p>
<p align="center">Block 21 Sale Price</p> <p>L 5 – 3.655 AC –</p> <p>L 6 – 3.289 AC</p> <p>L 7 – 3.611 AC –</p> <p>L 8 – 3.946 AC –</p> <p>L 9 – 3.034 AC –</p> <p>L 10 – 2.683 AC –</p> <p>L 11 – 2.985 AC –</p>
<p align="center">Block 24</p> <p>L 4 – 7.438 AC –</p> <p>L 5 – 1.760 AC – \$48,000</p> <p>L 6 – 1.110 AC –</p> <p>L 7 – 1.328 AC –</p> <p>L 8 – 2.171 AC –</p> <p>L 9 – 2.009 AC –</p>
<p align="center">Block 30</p> <p>L 1 – 2.265 AC –</p> <p>L 2 – 2.033 AC –</p>
<p align="center">Block 31</p> <p>L 1 – 2.175 AC –</p>

(Lot Status: O= Open for Sale, H= Hold for Customer, S= Lot Sold)

Plat map is subject to recorded Plat.