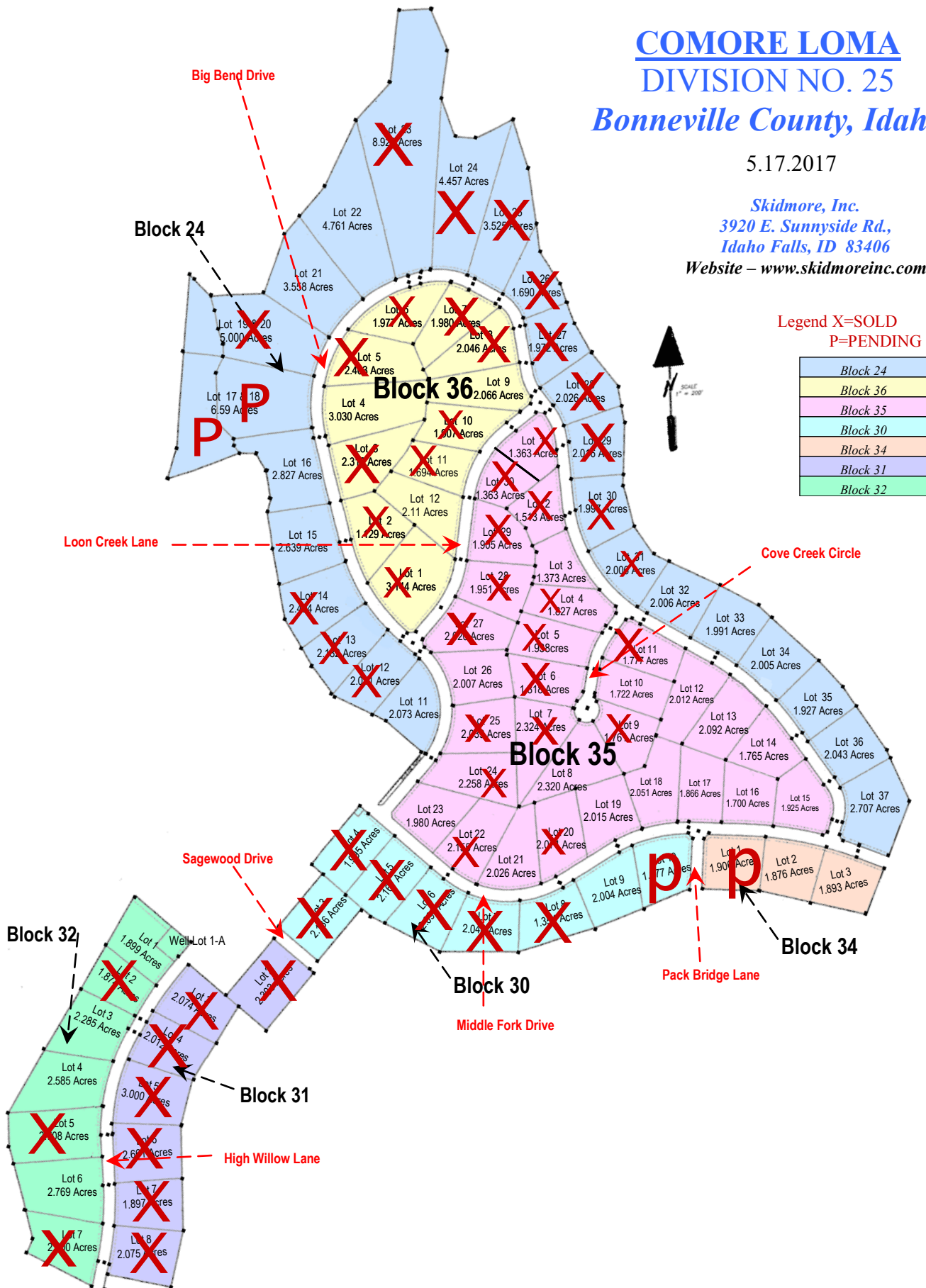


COMORE LOMA DIVISION NO. 25 Bonneville County, Idaho

5.17.2017

Skidmore, Inc.
3920 E. Sunnyside Rd.,
Idaho Falls, ID 83406

Website – www.skidmoreinc.com



Legend X=SOLD
P=PENDING

Block 24
Block 36
Block 35
Block 30
Block 34
Block 31
Block 32

Block 24		
Lot #	Acres	Sales Price
L 11	2.073	\$72,000
L 12	2.011	SOLD
L 13	2.182	SOLD
L 14	2.494	SOLD
L 15	2.639	\$52,000
L 16	2.827	\$60,000
L17 & L18	6.590	PENDING
L19 & L20	5.000	SOLD
L21	3.558	\$52,000
L 22	4.761	\$89,000
L 23	8.920	SOLD
L24	4.457	SOLD
L 25	3.525	SOLD
L 26	1.690	SOLD
L 27	1.972	SOLD
L 28	2.026	SOLD
L 29	2.016	SOLD
L 30	1.997	SOLD
L 31	2.006	SOLD
L 32	2.006	\$77,000
L 33	1.991	\$77,000
L 34	2.005	\$77,000
L 35	1.927	\$77,000
L 36	2.043	\$77,000
L 37	2.707	\$77,000

Block 30		
Lot #	Acres	Sales Price
L 3	2.136	SOLD
L 4	1.995	SOLD
L 5	2.167	SOLD
L 6	2.098	SOLD
L 7	2.048	SOLD
L 8	1.354	SOLD
L 9	2.004	\$63,000
L 10	1.977	PENDING

Block 31		
Lot #	Acres	Sales Price
L 2	2.303	SOLD
L 3	2.074	SOLD
L 4	2.012	SOLD
L 5	3.000	SOLD
L 6	2.661	SOLD
L 7	1.897	SOLD
L 8	2.075	SOLD

Block 32		
Lot #	Acres	Sales Price
L 1	1.899	\$30,000
L 2	1.874	SOLD
L 3	2.285	\$39,000
L 4	2.585	\$39,000
L 5	2.708	SOLD
L 6	2.769	\$39,000
L 7	2.200	SOLD

Block 34		
Lot #	Acres	Sales Price
L 1	1.906	PENDING
L 2	1.870	\$69,000
L 3	1.893	\$69,000

Block 35		
Lot #	Acres	Sales Price
L 1	1.363	SOLD
L 2	1.513	SOLD
L 3	1.373	\$68,000
L 4	1.827	SOLD
L 5	1.938	SOLD
L 6	1.818	SOLD
L 7	2.324	SOLD
L 8	2.320	\$75,000
L 9	1.761	SOLD
L 10	1.722	\$62,000

Skidmore, Inc.
 3920 E. Sunnyside Rd.,
 Idaho Falls, ID 83406
 Website – www.skidmoreinc.com

COMORE LOMA
DIVISION NO. 25
Bonneville County, Idaho

Block 35		
L 11	1.777	SOLD
L 12	2.012	\$84,000
L 13	2.092	\$82,000
L 14	1.765	\$85,000
L 15	1.925	\$87,000
L 16	1.700	\$76,000
L 17	1.866	\$77,000
L 18	2.051	\$78,000
L 19	2.015	\$71,000
L 20	2.071	SOLD
L 21	2.026	\$52,000
L 22	2.155	SOLD
L 23	1.980	\$36,000
L 24	2.258	SOLD
L 25	2.039	SOLD
L 26	2.007	\$35,000
L 27	2.020	SOLD
L 28	1.951	SOLD
L 29	1.905	SOLD
L 30	1.363	SOLD

Block 36		
Lot #	Acres	Sales Price
L 1	3.144	SOLD
L 2	1.129	SOLD
L 3	2.312	SOLD
L 4	3.030	\$66,000
L 5	2.403	SOLD
L 6	1.977	SOLD
L 7	1.980	SOLD
L 8	2.046	SOLD
L 9	2.066	\$68,000
L 10	1.907	SOLD
L 11	1.694	SOLD
L 12	2.181	\$81,000