

"THE THREE GABLES"



FRONT ELEVATION

SKIDMORE
SINCE 1958 INC RCE-1378
208-529-3672

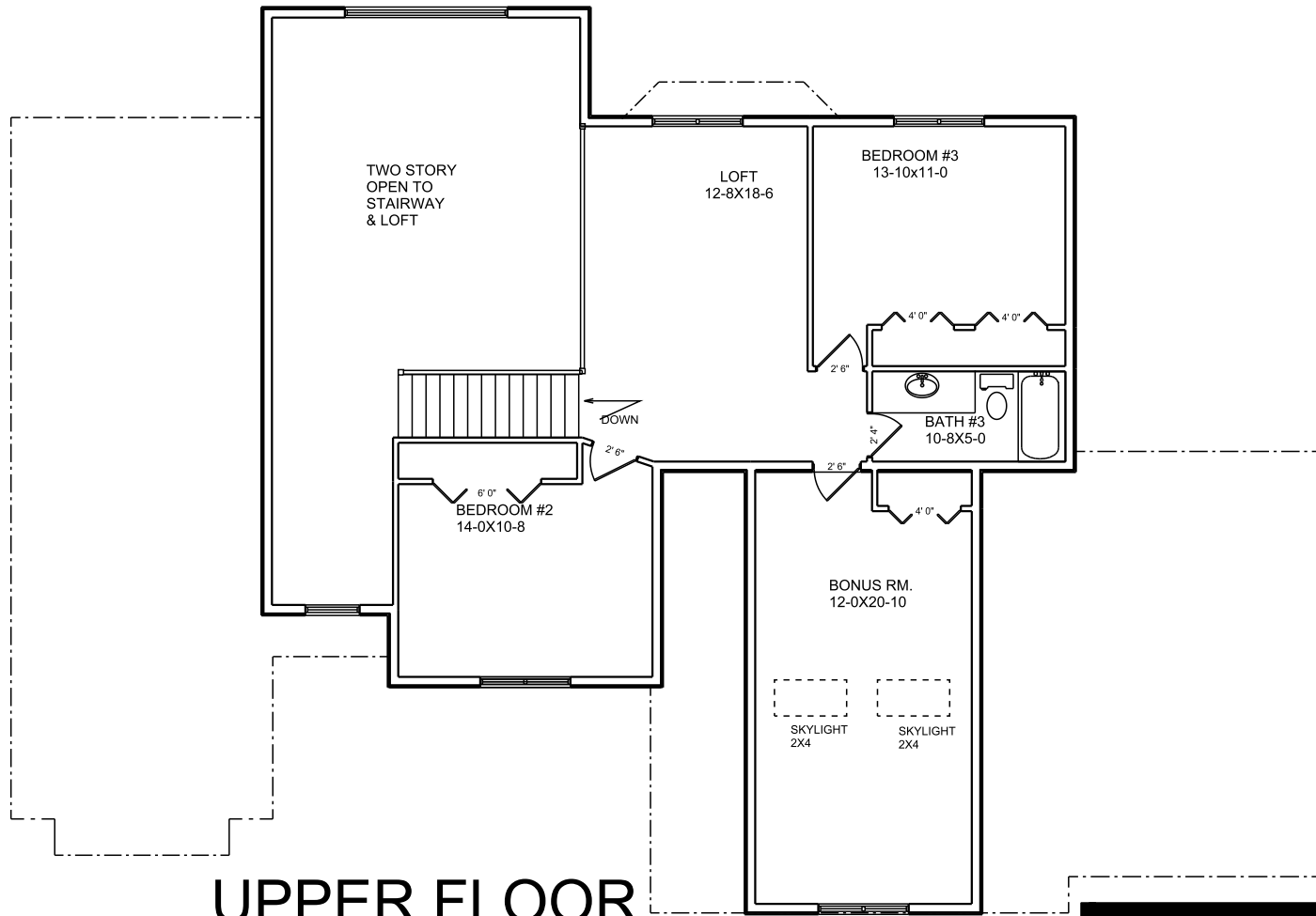


MAIN FLOOR

1770 SQ. FT. MAIN FLOOR
 1070 SQ. FT. UPPER FLOOR
 1755 SQ. FT. TOTAL BASEMENT
 4595 SQ. FT. TOTAL SQ. FT.
 965 SQ. FT. GARAGE



208-529-3672

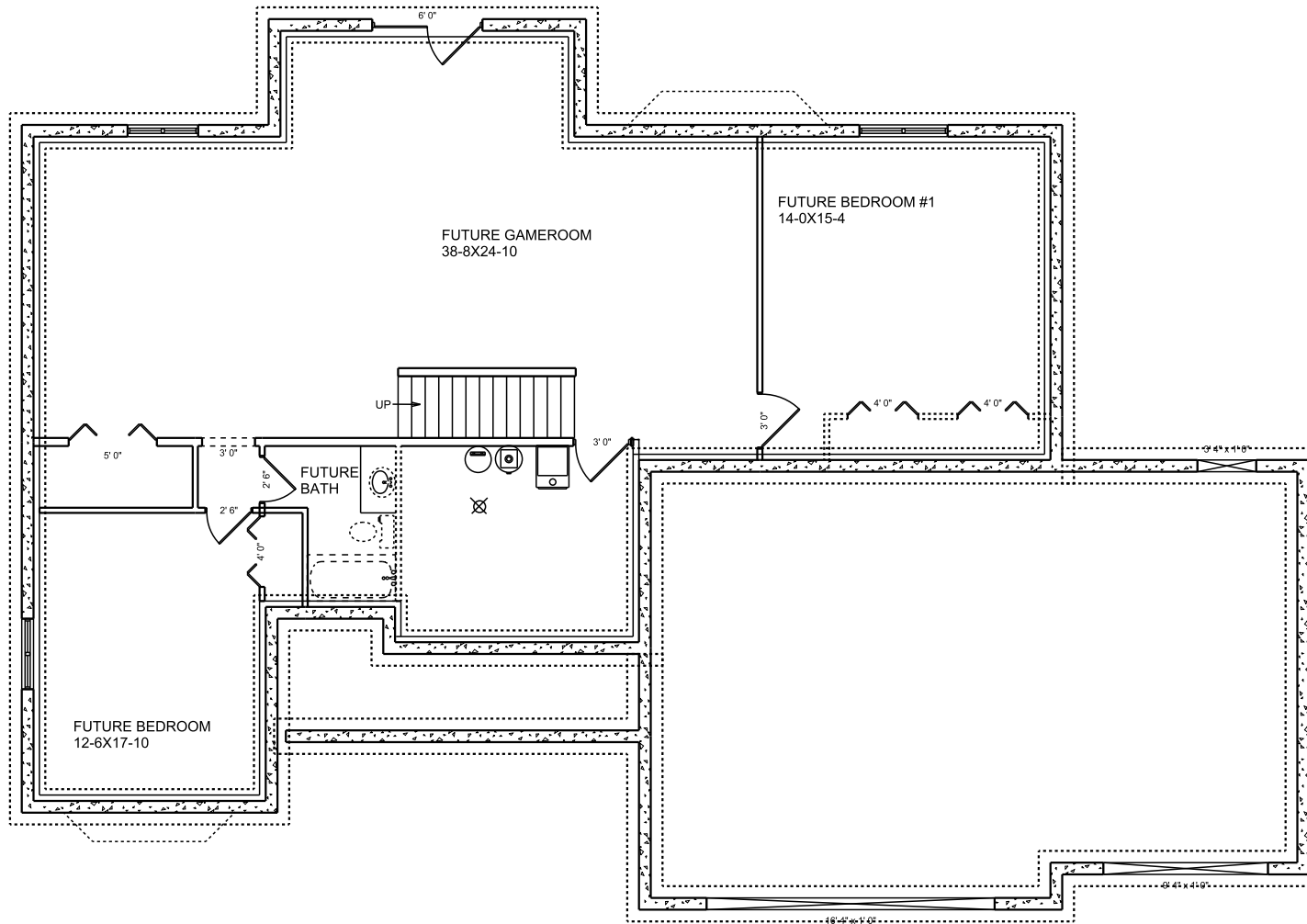


UPPER FLOOR

1070 SQ. FT.



208-529-3672



FOUNDATION PLAN

1755 SQ. FT.

SKIDMORE
 SINCE 1958 **INC** RCE-1378
 208-529-3672